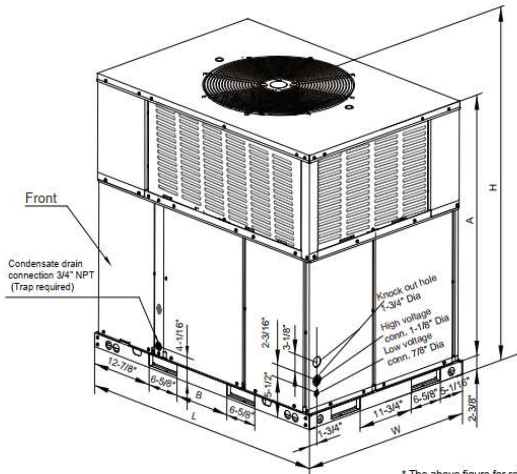


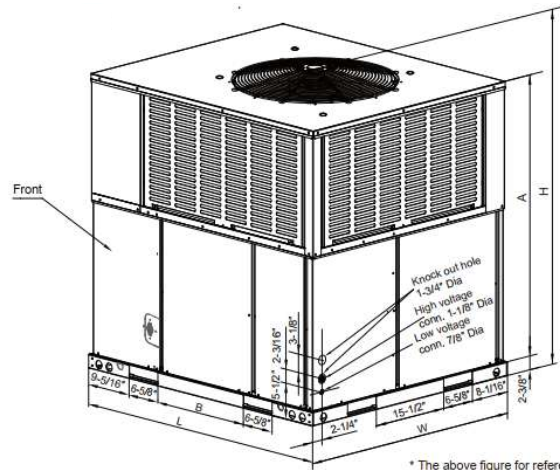
## R454B MRD M134HP Series Packaged Rooftop

### MRD Series

Cooling capacity: 24-60 kBTU/h



\* The above figure for ref



\* The above figure for reference purpose only.

Model	"L" in.[mm]	"W" in.[mm]	"H" in.[mm]	"A" in.[mm]	"B" in.[mm]
24,30,36	50-11/16 [1287]	35-1/16 [891]	46-13/16 [1190]	44-1/16 [1120]	11-3/4 [298]
42,48,60	51-9/16 [1310]	44-13/16 [1140]	51-7/16 [1306]	47-5/16 [1202]	19-11/16 [500]

# Specifications

	<b>MRD-24HWN10-M134G</b>	<b>MRD-30HWN10-M134G</b>	<b>MRD-36HWN10-M134G</b>
<b>NOMINAL CAPACITY</b>			
Cooling (BTU/h)	22,800	28,200	34,000
Heating (BTU/h)	22,800	28,200	34,200
<b>ELECTRICAL DATA</b>			
Voltage / Phase (60 Hz)	208/230V-1Ph	208/230V-1Ph	208/230V-1Ph
Min. / Max. Voltage (V)	187/253	187/253	187/253
Min. Circuit Amps (MCA) (A)	17.8	22.5	27.7
Max. Overcurrent Protection (MOP) (A)	25	30	35
<b>COMPRESSOR</b>			
Type	Rotary	Rotary	Rotary
Stage	Single	Single	Single
Rated Load Amps (RLA) (A)	12	14	18
Locked Rotor Amps (LRA) (A)	55	58	72
<b>OUTDOOR COIL</b>			
Type	Tube & Fin	Tube & Fin	Tube & Fin
Tube Size (O.D) (in)	9/32	9/32	9/32
<b>OUTDOOR FAN MOTOR</b>			
Motor Type	PSC	PSC	PSC
Capacitor (uF)	6	6	6
Horsepower (HP)	1/12	1/12	1/6
Full Load Amps (FLA) (A)	0.8	0.8	1.0
Rated RPM	878	878	840
<b>INDOOR COIL</b>			
Type	Tube & Fin	Tube & Fin	Tube & Fin
Tube Size (O.D) (in)	9/32	9/32	9/32
<b>INDOOR BLOWER MOTOR</b>			
Motor Type	PSC	ECM	ECM
Capacitor (uF)	12	/	/
Horsepower (HP)	1/5	1/2	1/2
Full Load Amps (FLA) (A)	2	4.2	4.2
Rated RPM	908	740	880
<b>REFRIGERATION SYSTEM</b>			
Refrigerant Control	Orifice	Orifice	Orifice
Refrigerant Charge (lbs. - oz.)	5 lbs. 10 oz.	5 lbs. 3 oz.	6 lbs. 13 oz.
<b>SOUND POWER (dB(A))</b>	78	78	78
<b>OPERATION RANGE</b>			
Cooling (°C)	10~51.7	10~51.7	10~51.7
Cooling (°F)	50~125	50~125	50~125
Heating (°C)	-15~30	-15~30	-15~30
Heating (°F)	5~86	5~86	5~86
<b>Dimension &amp; Weight</b>			
Unpacking (W*H*D)	mm 891 x 1190 x 1287 inch 35-1/16 x 46-13/16 x 50-11/16	mm 891 x 1190 x 1287 inch 35-1/16 x 46-13/16 x 50-11/16	mm 891 x 1190 x 1287 inch 35-1/16 x 46-13/16 x 50-11/16
Packing (W*H*D)	mm 937 x 1256 x 1330 inch 36-7/8 x 49-7/16 x 52-3/8	mm 937 x 1256 x 1330 inch 36-7/8 x 49-7/16 x 52-3/8	mm 937 x 1256 x 1330 inch 36-7/8 x 49-7/16 x 52-3/8
Net/Gross weight	kg 180/189 lb 397/416	kg 182/191 lb 401/420	kg 189/198 lb 415/435
Shipping per STD 40HQ	42	42	42

	<b>MRD-42HWN10-M134G</b>	<b>MRD-48HWN10-M134L</b>	<b>MRD-60HWN10-M134L</b>	<b>MRD-60HWN10-M134D</b>
<b>NOMINAL CAPACITY</b>				
Cooling (BTU/h)	41,000	46,500	56,500	56,500
Heating (BTU/h)	41,000	45,600	57,000	57,000
<b>ELECTRICAL DATA</b>				
Voltage / Phase (60 Hz)	208/230V-1Ph	208/230V-1Ph	208/230V-1Ph	208/230V-3Ph
Min. / Max. Voltage (V)	187/253	187/253	187/253	187/253
Min. Circuit Amps (MCA) (A)	34.1	33.9	42.8	29.1
Max. Overcurrent Protection (MOP) (A)	45	45	50	40
<b>COMPRESSOR</b>				
Type	Rotary	Scroll	Scroll	Scroll
Stage	Single	Single	Single	Three
Rated Load Amps (RLA) (A)	21	22	28	17
Locked Rotor Amps (LRA) (A)	86	95	125	123
<b>OUTDOOR COIL</b>				
Type	Tube & Fin	Tube & Fin	Tube & Fin	Tube & Fin
Tube Size (O.D) (in)	9/32	9/32	9/32	9/32
<b>OUTDOOR FAN MOTOR</b>				
Motor Type	PSC	PSC	PSC	PSC
Capacitor (uF)	15	15	15	15
Horsepower (HP)	1/3	1/3	1/3	1/3
Full Load Amps (FLA) (A)	2.1	2.1	2.1	2.1
Rated RPM	1,050	1,050	1,050	1,050
<b>INDOOR COIL</b>				
Type	Tube & Fin	Tube & Fin	Tube & Fin	Tube & Fin
Tube Size (O.D) (in)	9/32	9/32	9/32	9/32
<b>INDOOR BLOWER MOTOR</b>				
Motor Type	ECM	PSC	ECM	ECM
Capacitor (uF)	/	20	/	/
Horsepower (HP)	3/4	4/5	3/4	3/4
Full Load Amps (FLA) (A)	5.7	4.3	5.7	5.7
Rated RPM	950	976	950	950
<b>REFRIGERATION SYSTEM</b>				
Refrigerant Control	Orifice	Orifice	Orifice	Orifice
Refrigerant Charge (lbs. - oz.)	7 lbs. 15 oz.	8 lbs. 3 oz.	9 lbs. 8 oz.	9 lbs. 8 oz.
<b>SOUND POWER (dB(A))</b>	80	80	80	80
<b>OPERATION RANGE</b>				
Cooling (°C)	10~51.7	10~51.7	10~51.7	10~51.7
Cooling (°F)	50~125	50~125	50~125	50~125
Heating (°C)	-15~30	-15~30	-15~30	-15~30
Heating (°F)	5~86	5~86	5~86	5~86
<b>Dimension &amp; Weight</b>				
Unpacking (W*H*D)	mm	1140 x 1306 x 1310	1140 x 1306 x 1310	1140 x 1306 x 1310
	inch	44-13/16 x 51-7/16 x 51-9/16	44-13/16 x 51-7/16 x 51-9/16	44-13/16 x 51-7/16 x 51-9/16
Packing (W*H*D)	mm	1164 x 1329 x 1339	1164 x 1329 x 1339	1164 x 1329 x 1339
	inch	45-5/6 x 52-1/3 x 52-5/7	45-5/6 x 52-1/3 x 52-5/7	45-5/6 x 52-1/3 x 52-5/7
Net/Gross weight	kg	239/247	247/255	250/258
	lb	526/544	544/562	551/569
Shipping per STD 40HQ		31	31	31

# Airflow Data

Model Number	Motor Speed		External Static Pressure-Inches W.C. [kPa]								
			0[0]	0.1[.02]	0.2[.05]	0.3[.07]	0.4[.10]	0.5[.12]	0.6[.15]	0.7[.17]	0.8[.20]
24	Low	CFM	891	829	769	704	630	571	506	441	376
		Current2/A	0.98	1	1	0.95	0.94	0.92	0.92	0.91	0.89
		Power2/W	226	223	221	218	216	213	211	208	206
	Middle-Factory	SCFM	1199	1104	1009	900	828	750	610	535	440
		CFM	1.4	1.39	1.37	1.37	1.35	1.34	1.33	1.29	1.27
		Current2/A	324	320	316	312	308	304	300	296	292
	High	Power2/W	1398	1299	1200	1101	1002	897	810	711	600
		CFM	1.87	1.86	1.84	1.81	1.78	1.76	1.73	1.70	1.67
		Current2/A	429	421	413	405	398	389	383	373	366
30	Tap 1	CFM	784	722	662	578	485	434	365	288	217
		Current/A	0.9	0.9	0.9	1	1	1.1	1.1	1.2	1.2
		Power/W	101	105	110	115	119	127	130	136	141
	Tap 2	CFM	1030	983	935	890	840	758	713	664	613
		Current/A	1.89	1.93	1.96	2.01	2.05	2.11	2.15	2.19	2.23
		Power/W	199	204	209	215	221	230	235	241	246
	Tap 3	CFM	1150	1108	1064	1023	982	942	864	812	771
		Current/A	2.40	2.44	2.48	2.53	2.58	2.62	2.71	2.76	2.80
		Power/W	269	275	280	287	293	299	311	318	323
	Tap 4	CFM	1310	1271	1233	1195	1159	1122	1085	1045	966
		Current/A	3.26	3.31	3.36	3.41	3.46	3.51	3.56	3.62	3.72
		Power/W	387	393	400	406	414	421	428	436	450
	Tap 5	CFM	1367	1330	1291	1254	1217	1183	1148	1114	1078
		Current/A	3.65	3.69	3.74	3.79	3.84	3.89	3.95	4.00	4.06
		Power/W	439	446	452	459	466	473	481	489	498
36	Tap 1	CFM	784	722	662	578	485	434	365	288	217
		Current/A	0.9	0.9	0.9	1	1	1.1	1.1	1.2	1.2
		Power/W	101	105	110	115	119	127	130	136	141
	Tap 2	CFM	1030	983	935	890	840	758	713	664	613
		Current/A	1.89	1.93	1.96	2.01	2.05	2.11	2.15	2.19	2.23
		Power/W	199	204	209	215	221	230	235	241	246
	Tap 3	CFM	1150	1108	1064	1023	982	942	864	812	771
		Current/A	2.40	2.44	2.48	2.53	2.58	2.62	2.71	2.76	2.80
		Power/W	269	275	280	287	293	299	311	318	323
	Tap 4	CFM	1310	1271	1233	1195	1159	1122	1085	1045	966
		Current/A	3.26	3.31	3.36	3.41	3.46	3.51	3.56	3.62	3.72
		Power/W	387	393	400	406	414	421	428	436	450
	Tap 5	CFM	1350	1330	1291	1254	1217	1183	1148	1114	1078
		Current/A	3.65	3.69	3.74	3.79	3.84	3.89	3.95	4.00	4.06
		Power/W	439	446	452	459	466	473	481	489	498
42	Tap 1	CFM	1168	1118	1065	1012	954	897	845	793	752
		Current/A	1.92	1.97	2.03	2.09	2.14	2.20	2.25	2.29	2.33
		Power/W	206	213	221	229	237	245	252	257	263
	Tap 2	CFM	1246	1199	1149	1099	1047	992	941	891	845
		Current/A	2.18	2.24	2.29	2.35	2.42	2.48	2.54	2.59	2.63
		Power/W	242	250	258	267	276	285	293	299	306
	Tap 3	CFM	1418	1376	1332	1285	1239	1194	1144	1095	1050
		Current/A	2.90	2.96	3.02	3.09	3.15	3.22	3.29	3.36	3.42
		Power/W	343	352	360	369	379	388	398	408	416
	Tap 4	CFM	1701	1665	1629	1592	1555	1519	1481	1446	1405
		Current/A	4.58	4.65	4.72	4.80	4.88	4.96	5.04	5.13	5.20
		Power/W	582	593	603	615	626	638	650	663	673
	Tap 5	CFM	1774	1740	1706	1670	1635	1595	1552	1508	1461
		Current/A	5.13	5.21	5.28	5.36	5.44	5.50	5.54	5.58	5.62
		Power/W	663	674	685	696	708	717	724	729	735

Continued

Model Number	Motor Speed		External Static Pressure-Inches W.C. [kPa]								
			0[0]	0.1[.02]	0.2[.05]	0.3[.07]	0.4[.10]	0.5[.12]	0.6[.15]	0.7[.17]	0.8[.20]
48	Low - Factory	CFM	1506	1432	1357	1267	1200	1118	1039	960	882
		Current/A	2.18	2.16	2.14	2.11	2.08	2.06	2.03	2.00	1.97
		Power/W	452	444	434	422	410	399	388	376	365
	Middle	CFM	1592	1502	1412	1337	1261	1200	1108	1029	951
		Current/A	2.65	2.63	2.6	2.57	2.54	2.51	2.48	2.45	2.43
		Power/W	529	519.5	510	498	486	471	462	451	439
	High	CFM	1670	1592	1513	1422	1331	1222	1200	1088	1005
		Current/A	3.31	3.28	3.25	3.22	3.19	3.15	3.1	3.08	3.04
		Power/W	642	630.5	619	606	594	579	563	553	540
60 (208/23 0V~60Hz )	Tap 1	CFM	1168	1118	1065	1012	954	897	845	793	752
		Current/A	1.92	1.97	2.03	2.09	2.14	2.20	2.25	2.29	2.33
		Power/W	206	213	221	229	237	245	252	257	263
	Tap 2	CFM	1246	1199	1149	1099	1047	992	941	891	845
		Current/A	2.18	2.24	2.29	2.35	2.42	2.48	2.54	2.59	2.63
		Power/W	242	250	258	267	276	285	293	299	306
	Tap 3	CFM	1418	1376	1332	1285	1239	1194	1144	1095	1050
		Current/A	2.90	2.96	3.02	3.09	3.15	3.22	3.29	3.36	3.42
		Power/W	343	352	360	369	379	388	398	408	416
	Tap 4	CFM	1701	1665	1629	1592	1555	1519	1481	1446	1405
		Current/A	4.58	4.65	4.72	4.80	4.88	4.96	5.04	5.13	5.20
		Power/W	582	593	603	615	626	638	650	663	673
	Tap 5	CFM	1774	1740	1706	1670	1635	1595	1552	1508	1461
		Current/A	5.13	5.21	5.28	5.36	5.44	5.50	5.54	5.58	5.62
		Power/W	663	674	685	696	708	717	724	729	735
60 (208/23 0V 3~60Hz)	Tap 1	CFM	1168	1118	1065	1012	954	897	845	793	752
		Current/A	1.92	1.97	2.03	2.09	2.14	2.20	2.25	2.29	2.33
		Power/W	206	213	221	229	237	245	252	257	263
	Tap 2	CFM	1246	1199	1149	1099	1047	992	941	891	845
		Current/A	2.18	2.24	2.29	2.35	2.42	2.48	2.54	2.59	2.63
		Power/W	242	250	258	267	276	285	293	299	306
	Tap 3	CFM	1418	1376	1332	1285	1239	1194	1144	1095	1050
		Current/A	2.90	2.96	3.02	3.09	3.15	3.22	3.29	3.36	3.42
		Power/W	343	352	360	369	379	388	398	408	416
	Tap 4	CFM	1701	1665	1629	1592	1555	1519	1481	1446	1405
		Current/A	4.58	4.65	4.72	4.80	4.88	4.96	5.04	5.13	5.20
		Power/W	582	593	603	615	626	638	650	663	673
	Tap 5	CFM	1774	1740	1706	1670	1635	1595	1552	1508	1461
		Current/A	5.13	5.21	5.28	5.36	5.44	5.50	5.54	5.58	5.62
		Power/W	663	674	685	696	708	717	724	729	735

The rated airflow of system (high stage setting) requires more than 300 CFM/Ton

## Features

- Quiet horizontal discharge.
- Compatible with side and bottom air discharge
- Power-painted galvanized steel cabinet.
- Electric heat kit available as a field-installed option: 5/8/10/15/20kW.
- High-efficiency compressors operate smoothly, quietly, and consistently.
- Internal safeguards protect the compressor against high and low pressure, and coil temperature.
- Aluminum tube/aluminum fin coil.
- High-efficiency ECM blower motor.
- AHRI Certified and ETL listed.
- Compliant with UL-60335 certification.
- Uses more environmentally friendly R454B refrigerant.
- Full DC variable speed condenser motor, more efficient, smarter, and quieter.

## Midea Building Technologies Division



**Add.:** Midea Headquarters Building, 6 Midea Avenue, Shunde, Foshan, Guangdong, China

**Postal code:** 528311

mbt.midea.com/global [www.midea-group.com](http://www.midea-group.com) ics.midea.com



Note: Product specifications change from time to time as product improvements and developments are released and may vary from those in this document.