

make yourself at home

Split System

M Series Air Conditioner & Heat Pump
Up to 15.2 SEER2

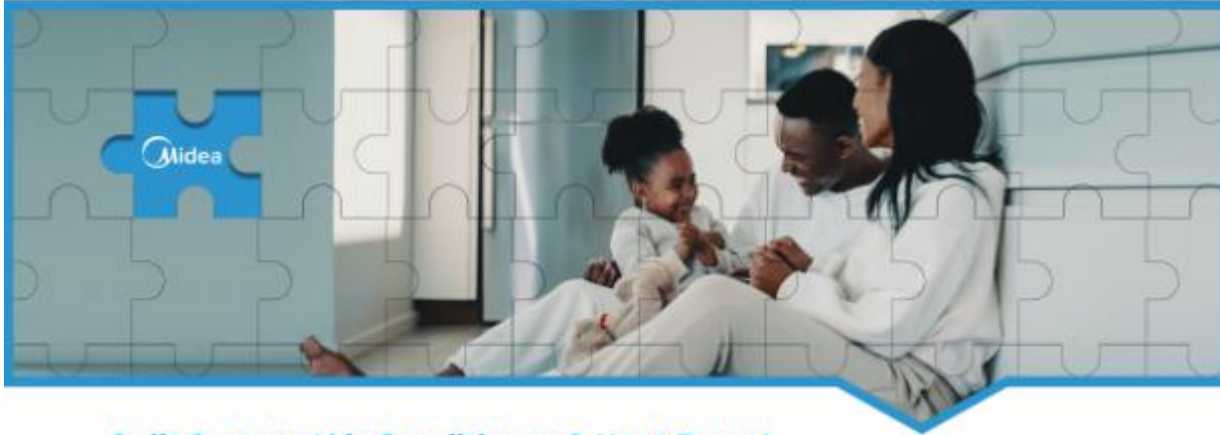
Multi-professional certification





Key Features

- 01 Eco-friendly R454B refrigerant with low GWP value.
- 02 Energy-efficient compressor.
- 03 Internal protection against high-temperature motor overload.
- 04 High quality condenser with inner-groove copper tube and aluminum fin.
- 05 Service valves with sweat connections and easy-access gauge ports.
- 06 Unique sound-control top design.
- 07 Compact design, easy installation and transportation.
- 08 Powder-coated galvanized steel cabinet.
- 09 Steel-louver coil guard.
- 10 Wire-fan discharge grille.



Split System (Air Conditioner & Heat Pump)

Type	Air Conditioner				Heat Pump
SERIES	MOVA134A		MOVA152A		MOVA152H
SALES REGION	North		National		National
SEER2	Up to 14.3		Up to 15.2		Up to 15.2
HSPF2	/		/		up to 7.8
CAPACITY	1.5-2.5Ton	3-5Ton	1.5-2.5Ton	3-5Ton	1.5-5Ton
COMPRESSOR TYPE	Rotary	Scroll	Rotary	Scroll	Scroll
CRANKCASE HEATER	-		-		✓
MOTOR TYPE	ECM		ECM		ECM
REFRIGERANT	R454B		R454B		R454B
COIL TYPE	Micro Channel		Tube-fin		Tube-fin
HIGH-PRESSURE SWITCH	✓		✓		✓
LOW-PRESSURE SWITCH	✓		✓		✓
DISCHARGE TEMPERATURE SWITCH	✓		✓		✓
OVERALL SOUND POWER LEVEL[dB(A)]	<80		<80		<80
FILTER DRIER	●		●		●

Note: ●—Customization options



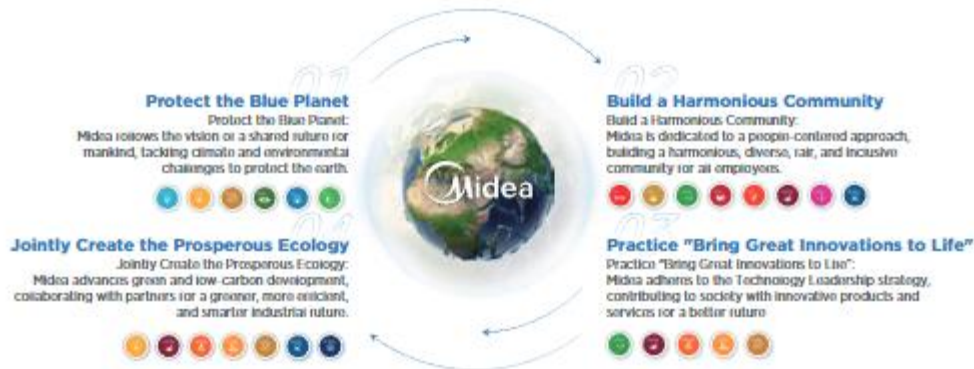
The development journey of Midea's products in North America

We have 20 years experience in manufacturing HVAC products for NA market and we understand your needs very well.



Midea Group's Mission and Vision

Midea Group actively embraces environmental, social, and governance responsibilities, practicing sustainable development in its business expansion.



Midea Group 2030 Sustainable Development Goals and Progress

Looking ahead, Midea Group will continue to stay true to the vision of "Bring Great Innovations to Life", and embrace green development capabilities, create more green solutions, and embrace a greener future!



Midea Building Technologies Division



Add: Midea Headquarters Building, 6 Midea Avenue, Shunde, Foshan, Guangdong, China
Postalcode: 528311

mbt.midea.com/global **www.midea-group.com** **ics.midea.com**

Note: Product specifications change from time to time as product improvements and developments are released and may vary from those in this document.