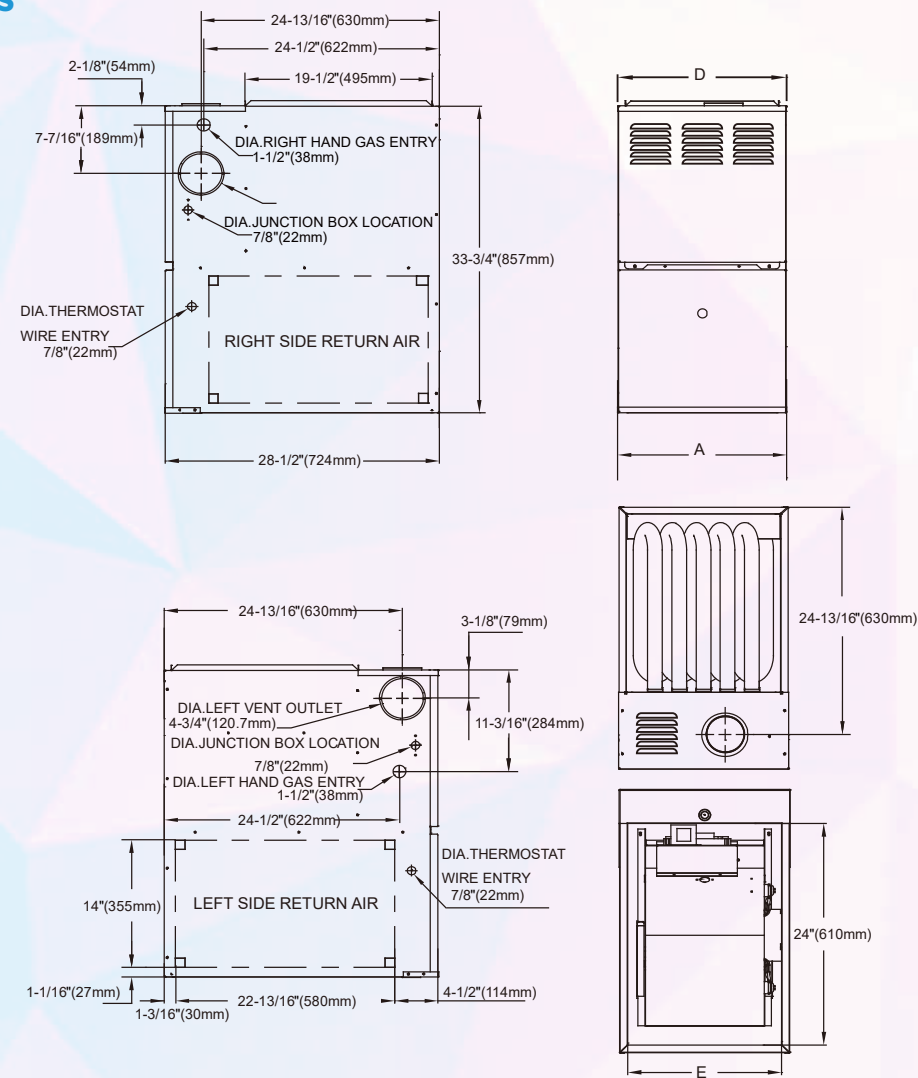


Dimensions



FURNACE SIZE	A CABINET WIDTH IN.	D SUPPLY AIR WIDTH IN.	E RETURN AIR WIDTH IN.	SHIP WT (lbs)
40A3A	14.5	13	15-57/32	119
60A3A	14.5	13	15-57/32	119
60B4A	17.5	16	15-27/32	126
80B4A	17.5	16	15-27/32	139
80C4A	21	19.5	19-13/32	146
100C5A	21	19.5	19-13/32	159
120D5A	24.5	23	22-27/32	170

Midea Building Technologies Division Midea Group

Add.: Midea Headquarters Building, 6 Midea Avenue, Shunde, Foshan, Guangdong, China

Postal code: 528311

mbt.midea.com/global www.midea-group.com ics.midea.com

Midea reserves the right to change the specifications of the product, and to withdraw or replace products without prior notification or public announcement. Midea is constantly developing and improving its products.



MGH80 Series Gas Furnace

80% AFUE

Standard Features

- ❖ Durable aluminized steel tubular heat exchanger.
- ❖ Hot-surface ignition for dependable operation.
- ❖ Quiet multi-speed direct-drive Blower.
- ❖ Natural gas and propane (LP) convertible.
- ❖ Designed for multi-position installation:
Up flow, down flow, horizontal.
- ❖ Industry-standard cabinet sizes for easy replacement, installation and add-on cooling.
- ❖ Convenient left or right connection for gas and electric service.
- ❖ Removable bottom for side or bottom return application.



Midea-Discover Easy Comfort



Specifications

Model	MGV80M040A3A	MGV80M060A3A	MGV80M060B4A	MGV80M080B4A
FUEL TYPE	Natural/Propane Gas	Natural/Propane Gas	Natural/Propane Gas	Natural/Propane Gas
GAS HEATING PERFORMANCE				
Input (BTU/h)	40,000	60,000	60,000	80,000
Output (BTU/h)				
Natural Gas	32,000	48,000	48,000	64,000
LP Gas	32,000	48,000	48,000	64,000
AFUE	80	80	80	80
Available AC @ 0.5" ESP	1/1.5/2/2.5	1.5/2/2.5/3	1.5/2/2.5/3	2.5/3/3.5/4
Temperature Rise Range (° F)	20-50	25-55	25-55	30-60
ELECTRICAL DATA				
Voltage/Phase(60Hz)	115	115	115	115
Min. / Max. Voltage	104/127	104/127	104/127	104/127
Min. Circuit Ampacity	8	8	8	8
Max. Overcurrent Protection	15	15	15	15
FAN MOTOR				
Motor Type	ECM	ECM	ECM	ECM
Horsepower	1/2	1/2	1/2	1/2
Rated RPM	1050	1050	1050	1050
Full Load Amps (FLA)	8	8	8	8
Capacitor (uF)	\	\	\	\
CIRCULATOR BLOWER				
Material	Metal	Metal	Metal	Metal
Type	Centrifugal	Centrifugal	Centrifugal	Centrifugal
Size (D x H) (in.)	11-3/16x 6-9/64	11-3/16x 6-9/64	11-3/16x 9-41/64	11-3/16x 9-41/64
Vent Diameter ¹	3"/4"	3"/4"	3"/4"	3"/4"
No. of Burners	3	3	3	5
Speed Mode Number	5	5	5	5

Specifications

Model	MGV80M080C4A	MGV80M100C5A	MGV80M120D5A
FUEL TYPE	Natural/Propane Gas	Natural/Propane Gas	Natural/Propane Gas
GAS HEATING PERFORMANCE			
Input (BTU/h)	80,000	100000	120000
Output (BTU/h)			
Natural Gas	64,000	80,000	96,000
LP Gas	64,000	80,000	96,000
AFUE	80	80	80
Available AC @ 0.5" ESP	2.5/3/3.5/4	3.5/4/4.5/5	3.5/4/4.5/5
Temperature Rise Range (° F)	30-60	30-60	35-65
ELECTRICAL DATA			
Voltage/Phase(60Hz)	115	115	115
Min. / Max. Voltage	104/127	104/127	104/127
Min. Circuit Ampacity	8	14	14
Max. Overcurrent Protection	15	20	20
FAN MOTOR			
Motor Type	ECM	ECM	ECM
Horsepower	1/2	1	1
Rated RPM	1050	1050	1050
Full Load Amps (FLA)	8	14	14
Capacitor (uF)	\	\	\
CIRCULATOR BLOWER			
Material	Metal	Metal	Metal
Type	Centrifugal	Centrifugal	Centrifugal
Size (D x H) (in.)	11-3/16 x 11-3/16	11-3/16 x 11-3/16	12-6/8 x 11-1/4
Vent Diameter ¹	3"/4"	3"/4"	3"/4"
No. of Burners	5	6	7
Speed Mode Number	5	5	5